



GAT MONTHLY MEMBERSHIP PROGRESS REPORT

Results as of: 1/31/2024

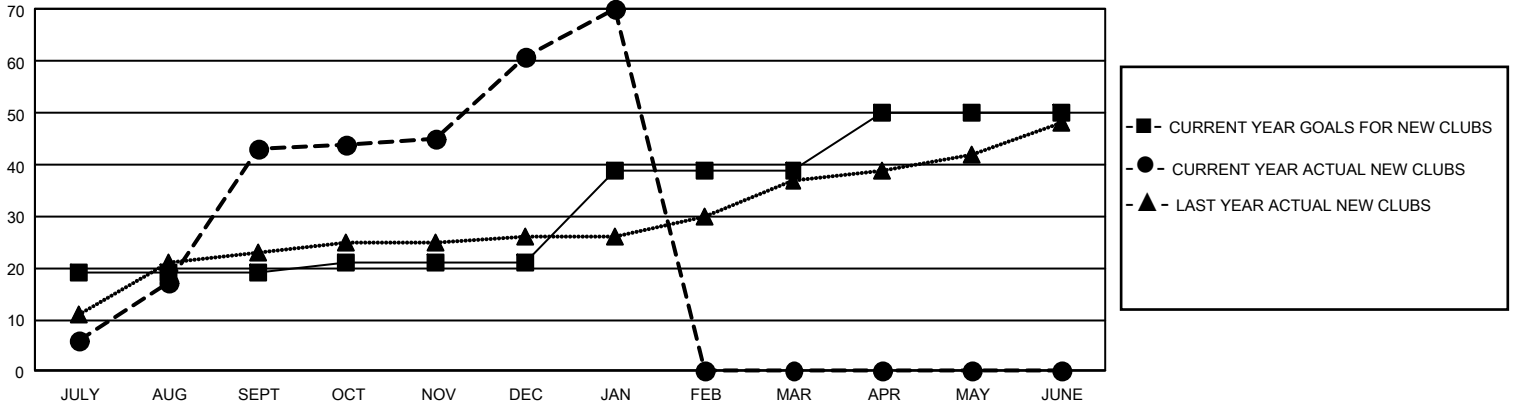
GMT Constitutional Area 6 - I, Group I

REPORT DOES NOT INCLUDE CLUBS IN UNDISTRICTED AREAS.

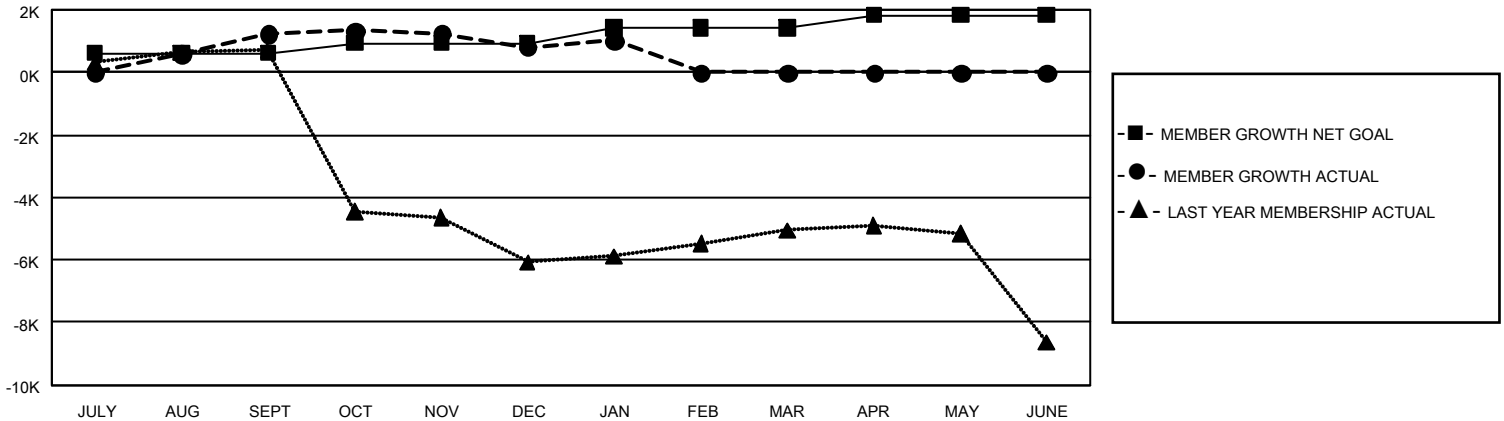
Clubs			
RESULTS FOR 2023-2024			
QUARTER	NEW CLUB GOAL	NEW CLUBS	DROPPED CLUBS
JULY/AUG/SEPT	57	43	14
OCT/NOV/DEC	6	18	37
JAN/FEB/MAR	54	9	6
APR/MAY/JUNE	33	0	0

Members			
RESULTS FOR 2023-2024			
QUARTER	MEMBER GROWTH NET GOAL	MEMBER GROWTH ACTUAL	DROPPED MEMBERS ACTUAL (including transfers)
JULY/AUG/SEPT	610	3,059	1,444
OCT/NOV/DEC	325	1,237	1,562
JAN/FEB/MAR	500	472	227
APR/MAY/JUNE	405	0	0

GOALS AND ACTUAL NEW CLUBS CUMULATIVE



GOALS AND ACTUAL MEMBERS CUMULATIVE



DROPPED CLUBS: 57	598 CLUBS OF 1,271 ADDED 1 OR MORE NEW MEMBERS	GENDER DISTRIBUTION	
		MALE 24,780 (66.66%)	FEMALE 12,387 (33.32%)
DROPPED MEMBERS		NON BINARY 2 (0.01%)	PREFER NOT TO ANSWER 5 (0.01%)
DECEASED 50	CLICK HERE FOR CUMULATIVE MEMBERSHIP DATA	TOTAL FAMILY UNIT MEMBERS 14,146	
CLUB CANCELLED 711		FAMILY MEMBERS PAYING HALF DUES 8,006	
OTHER 2,472			
TOTAL 3,233			